



treading lighter on the earth

#### ECO HUT SPECIFICATIONS

- Energy rating to BCA Requirements
- Engineer designed wall & roof framing
- Design by award winning building design company
- Colour selection advice by professional Interior Designer
- Complete painting external and internal walls
- R1.5 Insulation to all external walls. (R2.0 to required climate zones)
- R1.5 Insulation to all internal walls
- R3.0 Insulation to all ceilings
- Quality lever style door hardware
- Ceramic vanity basins thru out & Dual flush china cisterns
- Post form laminated bench tops to all cabinets
- Clear glazed framed shower screen & pivot doors
- Framed mirrors to all Bathroom, Ensuite and Powder rooms
- Floor tiles to Bathroom, Ensuite, Laundry, Powder Room, WC
- Privacy locks to Bathroom, Ensuite & WC
- Full vanity cupboard & doors to Ensuite & Bathroom
- Deluxe custom built kitchen
- Stainless steel kitchen sink with flick mixer
- Stainless steel kitchen appliances
- Quality double power points
- Melamine lined shelves to linen cupboards
- 3 remote controls when sectional panel lift doors are supplied

#### ECO RESORT SPECIFICATIONS

- Energy rating to BCA Requirements
- Engineer designed wall & roof framing
- Design by award winning building design company
- Colour selection advice by professional Interior Designer
- Complete painting external and internal walls
- R1.5 Insulation to all external walls. (R2.0 to required climate zones)
- R1.5 Insulation to all internal walls
- R3.0 Insulation to all ceilings
- Shadow line cornices
- Quality lever style door hardware. (Upgraded)
- Ceramic vanity basins thru out. (Upgraded) & Dual flush china cisterns
- Stone bench tops to all cabinets
- Clear glazed framed shower screen & pivot doors
- Framed mirrors to all Bathroom, Ensuite and Powder rooms
- Floor tiles to Bathroom, Ensuite, Laundry, Powder Room, WC
- Privacy locks to Bathroom, Ensuite & WC
- Full vanity cupboard & doors to Ensuite & Bathroom
- Deluxe custom built kitchen with over head cupboards
- Stainless steel kitchen sink with flick mixer & kitchen appliances (Upgraded)
- Quality double power points
- Melamine lined shelves to linen cupboards
- 3 remote controls when sectional panel lift doors are supplied.

#### EXTRAS THAT CAN BE ADDED

- |   |                                   |
|---|-----------------------------------|
| Back to Grid Solar Power                        | Water Tank                        |
| Grey Water Recycling                            | Water Purifier for Drinking Water |
| Security  | Ducted Vacuum                     |
| Air Conditioning                                | Polished Concrete Floors          |
| Timber Floors                                   | Smart Wiring                      |
| Landscaping                                     | Floor Coverings                   |
| Window Treatments                               | Double Glazed Windows             |
| Extra Sound Insulation                          | Home Theatre System               |
| Furniture Custom Designed To Suit Your New Home |                                   |

*As Eco Designer Homes believes in doing the best for their clients, Eco partners itself with the best in the industry from a national award winning building designer, interior designers to city and local rural builders aimed at creating your own dream resort.*

Eco Designer Homes Pty Ltd  
Suite 11/22 Parry Ave, Bateman, Western Australia 6150  
Phone: (08) 9332 3772 Fax: (08) 9332 2033  
Email: [info@ecodesignerhomes.com](mailto:info@ecodesignerhomes.com)  
Web: [www.ecodesignerhomes.com](http://www.ecodesignerhomes.com)



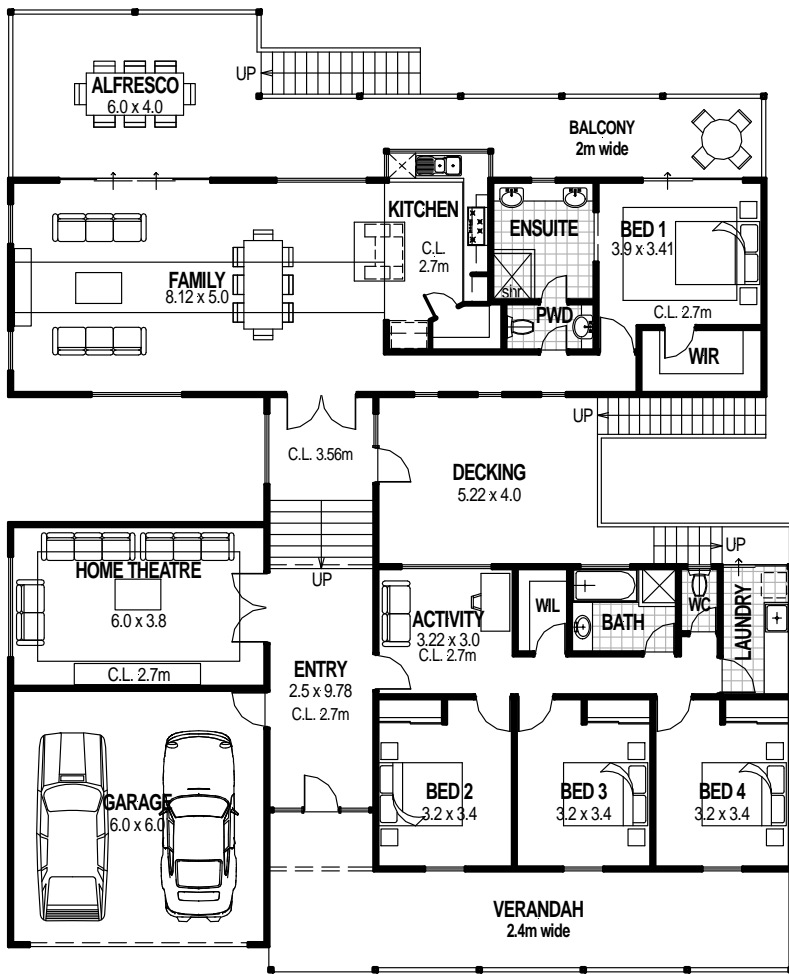
# SEAWARD LEDGE



DISPLAY HOME  
BEACHHAVEN DRIVE  
LINDSAY BEACH, YANCHEP



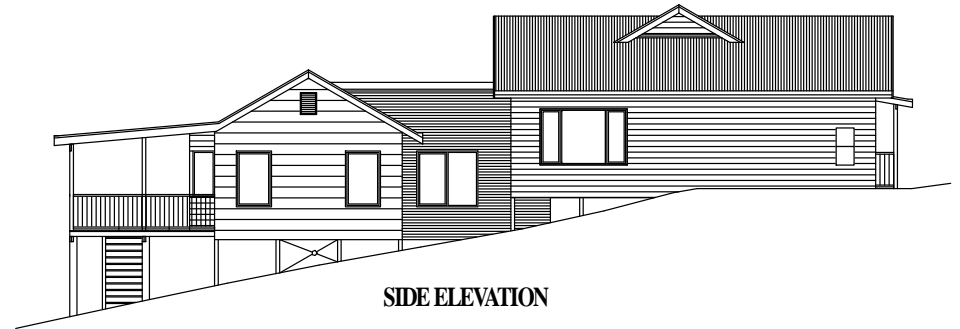
**HIA members**  
the best in the business



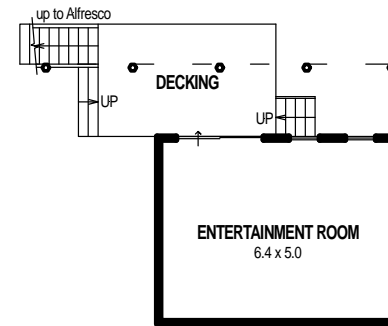
FLOOR PLAN



FRONT ELEVATION



SIDE ELEVATION



UNDERCROFT PLAN  
(Under Bed 1 & Ensuite)



SEAWARD LEDGE



SEAWARD LEDGE